



# MONTHLY MEMBERSHIP PROGRESS REPORT

District 201Q1

Results as of: 12/31/2014

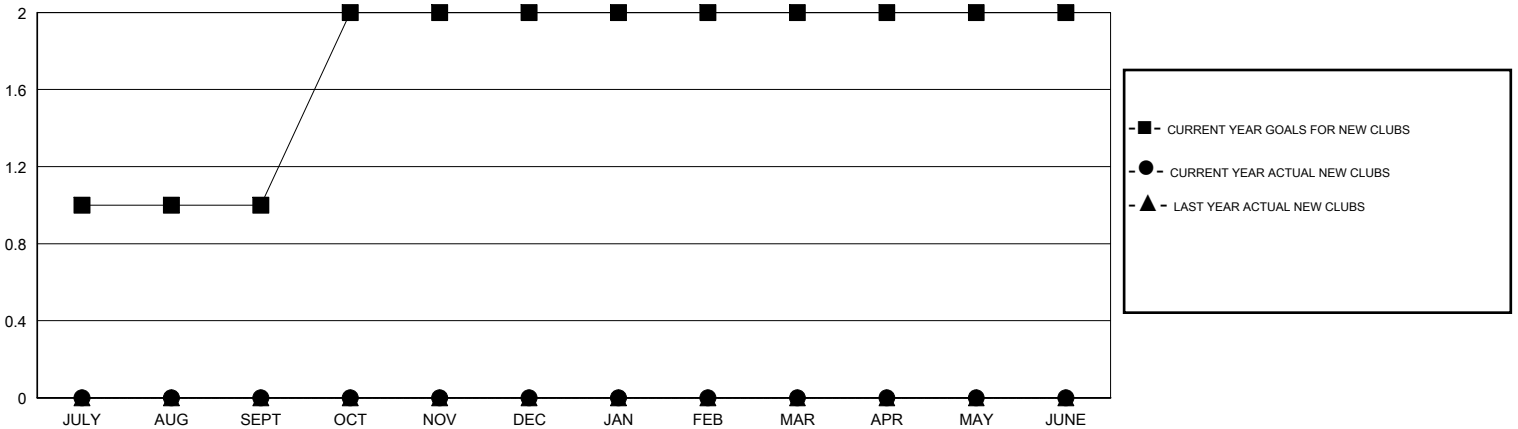
GMT: John Muller

LOCATION AUSTRALIA

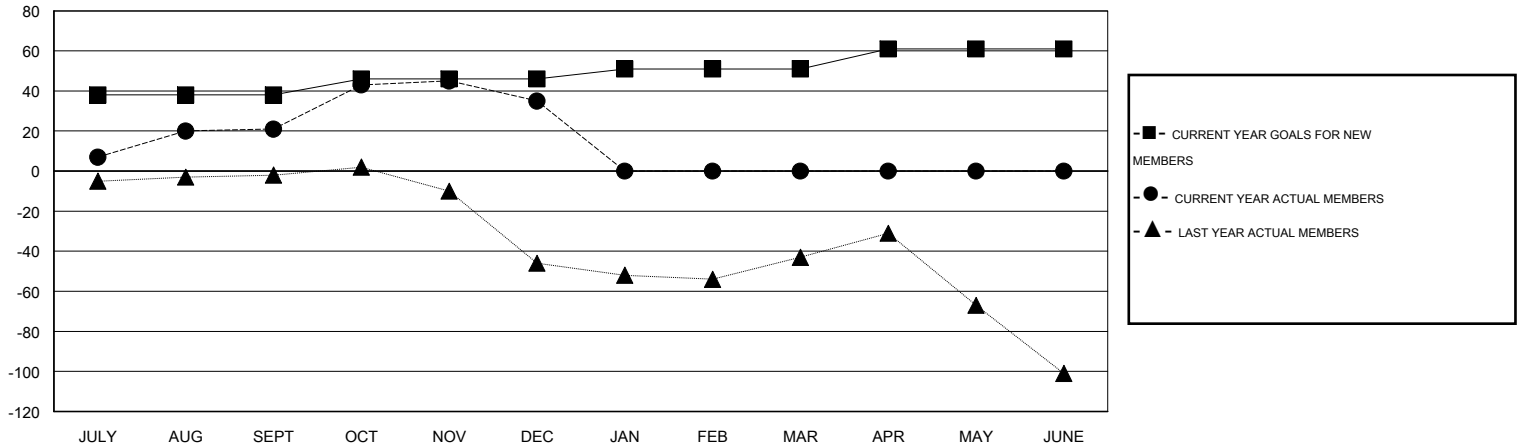
GMT CA 7

Clubs					Members				
RESULTS FOR 2014-2015					RESULTS FOR 2014-2015				
QUARTER	NEW CLUB GOAL	NEW CLUBS	DROPPED CLUBS	NET GAIN/LOSS	QUARTER	NEW MEMBER GOAL	CHARTER AND NEW MEMBERS ADDED	DROPPED MEMBERS	NET GAIN/LOSS
JULY/AUG/SEPT	1	0	1	-1	JULY/AUG/SEPT	38	70	49	21
OCT/NOV/DEC	1	0	1	-1	OCT/NOV/DEC	8	87	73	14
JAN/FEB/MAR	0	0	0	0	JAN/FEB/MAR	5	0	0	0
APR/MAY/JUNE	0	0	0	0	APR/MAY/JUNE	10	0	0	0

GOALS AND ACTUAL NEW CLUBS CUMULATIVE



GOALS AND ACTUAL MEMBERS CUMULATIVE



DROPPED CLUBS: 2	52 CLUBS OF 84 ADDED 1 OR MORE NEW MEMBERS	<b>GENDER DISTRIBUTION</b> MALE 1,179 (60.74%) FEMALE 762 (39.26%)
<b>DROPPED MEMBERS</b> DECEASED 16 CLUB CANCELLED 0 OTHER 106 TOTAL 122	<a href="#">CLICK HERE FOR HEALTH ASSESSMENT DATA</a>	FAMILY UNIT MEMBERS 465 HEAD OF HOUSEHOLD 229 NON-HEAD OF HOUSEHOLD 236